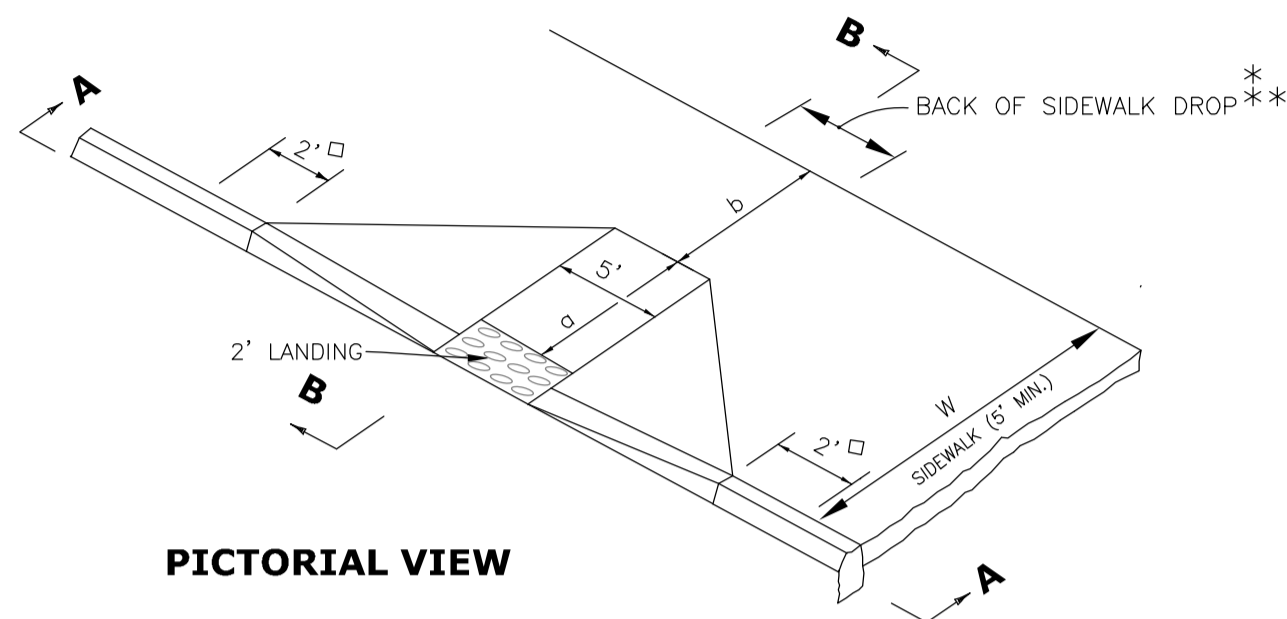


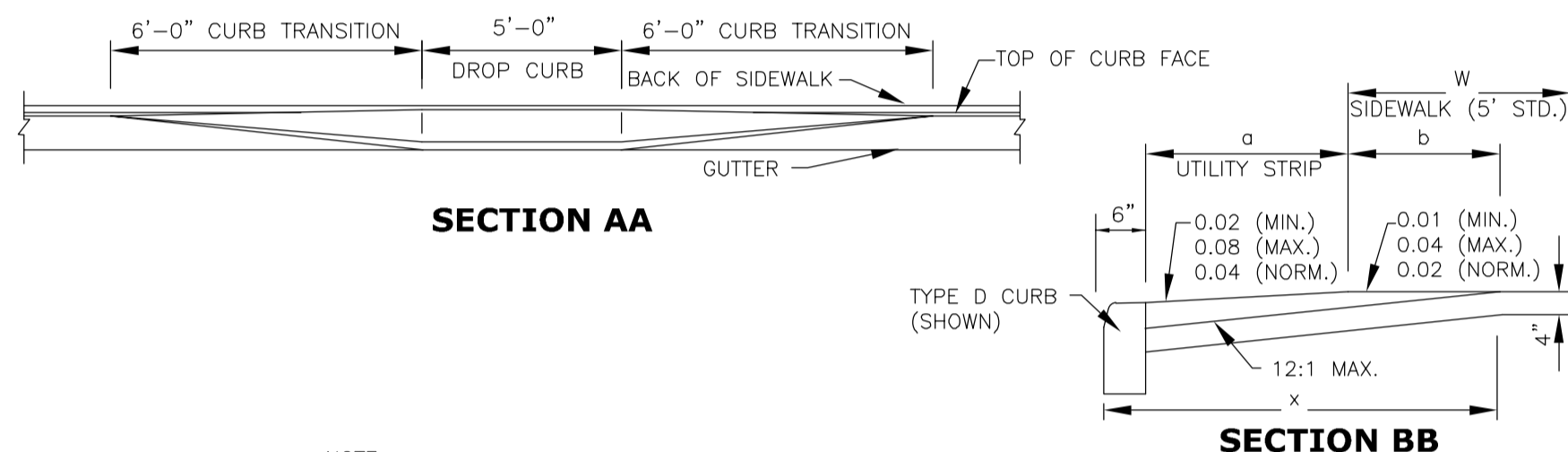
W	a	W + a + 10"	X	b
5'	0'	5.8'	5.8'	5.0'*
6'	0'	6.8'	6.8'	6.0'**
7'	0'	7.8'	7.3'	6.5'**
8'	0'	8.8'	7.3'	6.5'**
5'	2.0'	7.8'	7.8'	5.0'
5'	2.5'	8.3'	8.1'	4.8'
5'	3.0'	8.8'	8.3'	4.4'
5'	3.5'	9.3'	8.4'	4.1'
5'	4.0'	9.8'	8.6'	3.8'
5'	4.5'	10.3'	8.7'	3.4'
5'	5.0'	10.8'	8.9'	3.1'

$b = x - (a + 10")$   
b = DISTANCE FROM FRONT EDGE OF SIDEWALK TO BACK POINT OF 12:1 SLOOE  
\* BACK OF SIDEWALK DROP REQUIRED FOR ALL SIDEWALK SLOPES  
\*\* BACK OF SIDEWALK DROP REQUIRED FOR SIDEWALK SLOPES 0.04 AND PART 0.02

◇ NOT LESS THAN 2' OF FULL HEIGHT CURB ADJACENT TO DIAGONAL RAMP AND WITHIN CROSSWALK LIMITS  
□ CROSSWALKS WIDTHS AND CONFIGURATION VARY; MUST CONFORM TO TRAFFIC DESIGN STANDARDS



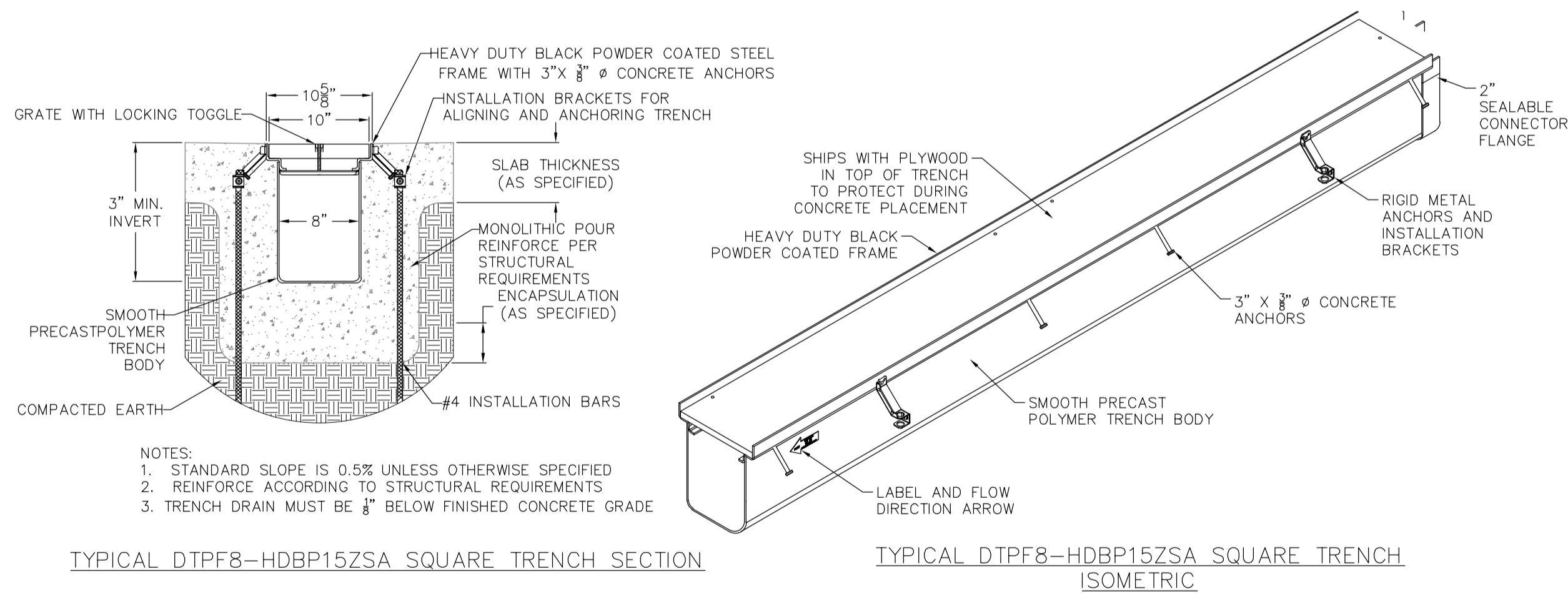
PICTORIAL VIEW



NOTE:  
RAMPS SHALL HAVE A TACTILE SURFACE, TEXTURED TO A DEPTH NOT EXCEEDING 1/8" BY USE OF A TAMP OR ROLLER FABRICATED WITH AN IMPRINTING SURFACE OF EITHER 1" MESH 0.250 WIRE CLOTH (PLAIN WEAVE, CONVENTIONAL CRIMP), 1-1/2" #6 EXPANDED METAL (STANDARD) OR 3 LB. EXPANDED METAL GRATING.

### INTRABLOCK RAMPS AND DIMENSIONAL FEATURES FOR RAMPS TRANSVERSE TO SIDEWALKS

N.T.S.



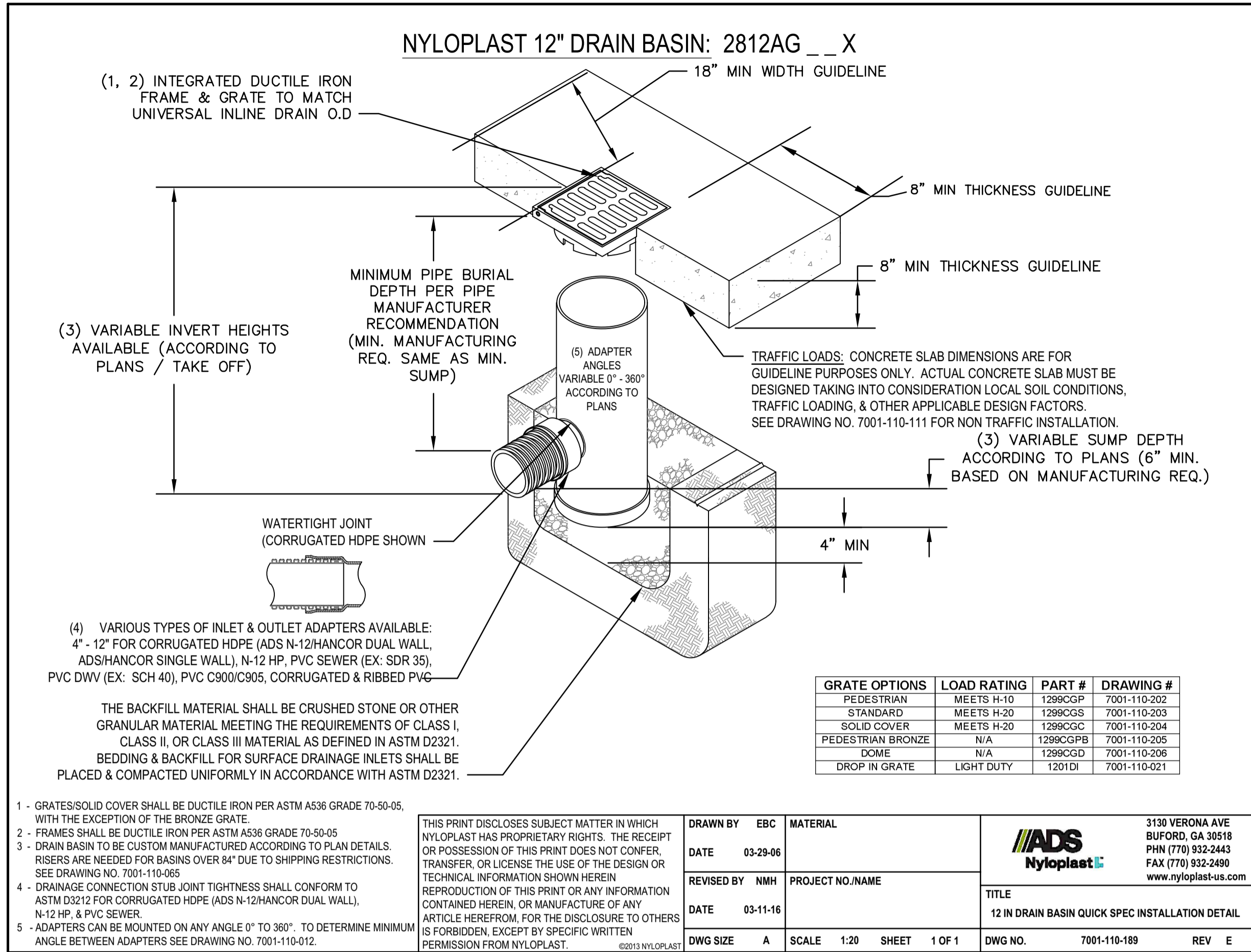
TYPICAL DTPF8-HDBP15ZSA SQUARE TRENCH SECTION

TYPICAL DTPF8-HDBP15ZSA SQUARE TRENCH ISOMETRIC

DTPF8-HDBP15ZSA OR APPROVED EQUAL  
SEE PLAN VIEW TRENCH INFORMATION FOR SPECIFIC SIZE AND TYPE.

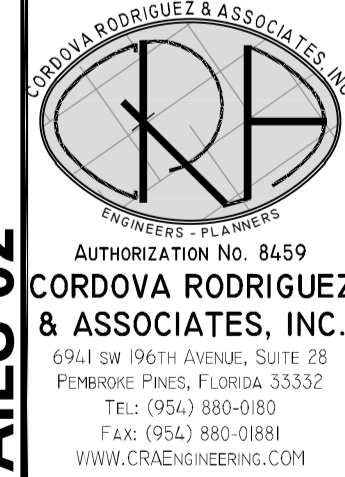
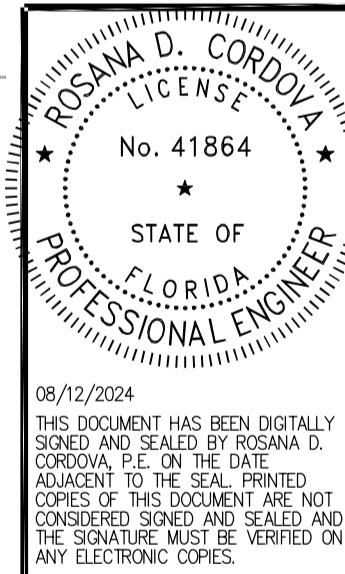
### TRENCH DRAIN SYSTEM

N.T.S.



FOR REVIEW ONLY

FIBERBUILT UMBRELLA  
2201 WEST ATLANTIC BOULEVARD, POMPANO BEACH, FL, 33069  
FOR: FIBERBUILT UMBRELLA



PAVING, GRADING AND  
DRAINAGE DETAILS 02

DESIGN: OG  
CHECKED: ROC  
SCALE: AS NOTED  
DATE: 07/30/2024  
PROJECT NO. 23.236-01  
SHT 07 OF 13  
DWG NO. C232